

**CATÁLOGO DE
RESPUESTOS PIAZZA
2019 v1.5 FF
BOMBAS A TORNILLO EXCÉNTRICO**



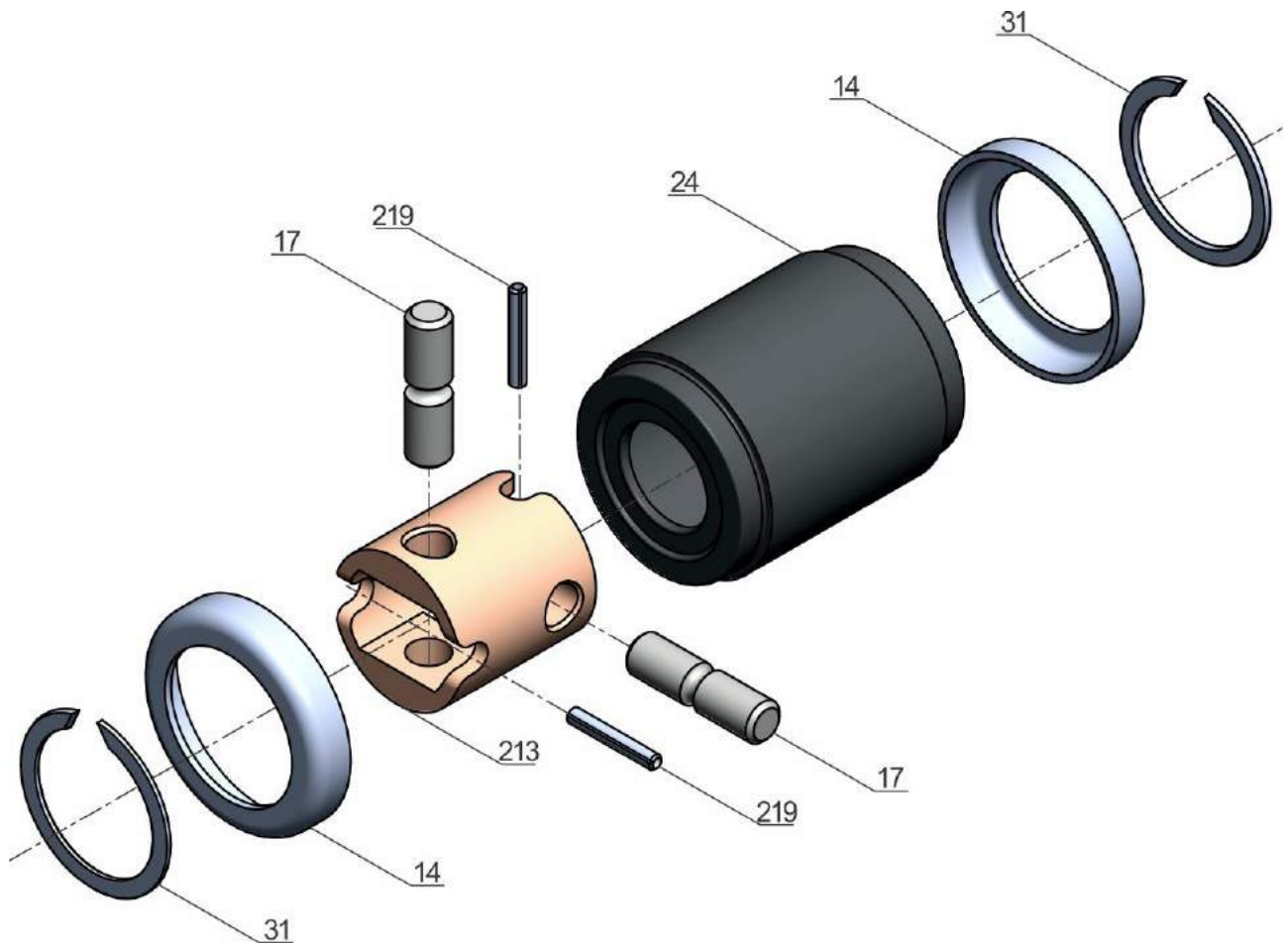
PIAZZA

Establecemos Vínculos

Índice:

• CARDAN A1	pag. 2
• CARDAN A3	pag. 4
• CARDAN A4	pag. 6
• CARDAN A5	pag. 8
• CARDAN G1	pag. 10
• CARDAN F1	pag. 12
• CARDAN B	pag. 14
• CARDAN C	pag. 17
• CARDAN D	pag. 20
• CARDAN E	pag. 23
• ESTATOR 236	pag. 26
• ESTATOR 375	pag. 27
• ESTATOR 600	pag. 28
• ESTATOR 1024	pag. 29
• ESTATOR 1500	pag. 30
• ESTATOR 1900	pag. 31
• ESTATOR 2650	pag. 32
• ESTATOR 4500	pag. 33
• TORNILLO EXCÉNTRICO 236	pag. 34
• TORNILLO EXCÉNTRICO 375	pag. 35
• TORNILLO EXCÉNTRICO 600	pag. 36
• TORNILLO EXCÉNTRICO 1024	pag. 37
• TORNILLO EXCÉNTRICO 1500	pag. 38
• TORNILLO EXCÉNTRICO 1900	pag. 39
• TORNILLO EXCÉNTRICO 2650	pag. 40
• TORNILLO EXCÉNTRICO 4500	pag. 41
• TORNILLO EXCÉNTRICO 6300	pag. 42
• SELLOS MECÁNICOS	pag. 43

CARDAN A1



REFERENCIA	PIEZA	CANTIDAD	CODIGO
14	BUJE PROTECCIÓN	2	1121
17	PERNO CARDAN	2	2052
24	MANGUITO CARDAN	1	2056
31	ANILLO SEEGER	2	1283
213	BLOQUE CARDAN	1	2062
219	ESPINA ELÁSTICA	2	Ø3x20
MEDIDA EXTERNA	mm.	Ø41x58.2	---
PESO APROXIMADO	Kg.	0.15	---
CANTIDAD DE GRASA	ml.	8	---

CARDAN A1



CONJUNTO CARDAN

CARDAN A1



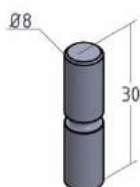
BUJE PROTECCIÓN

CARDAN A1



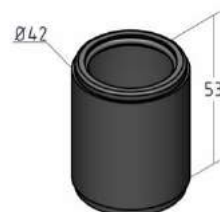
PERNO CARDAN

CARDAN A1



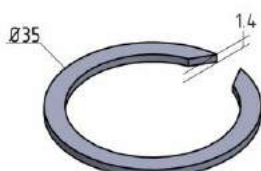
MANGUITO CARDAN

CARDAN A1



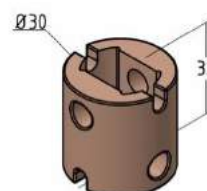
ANILLO SEEGER

CARDAN A1



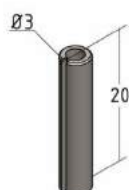
BLOQUE CARDAN

CARDAN A1

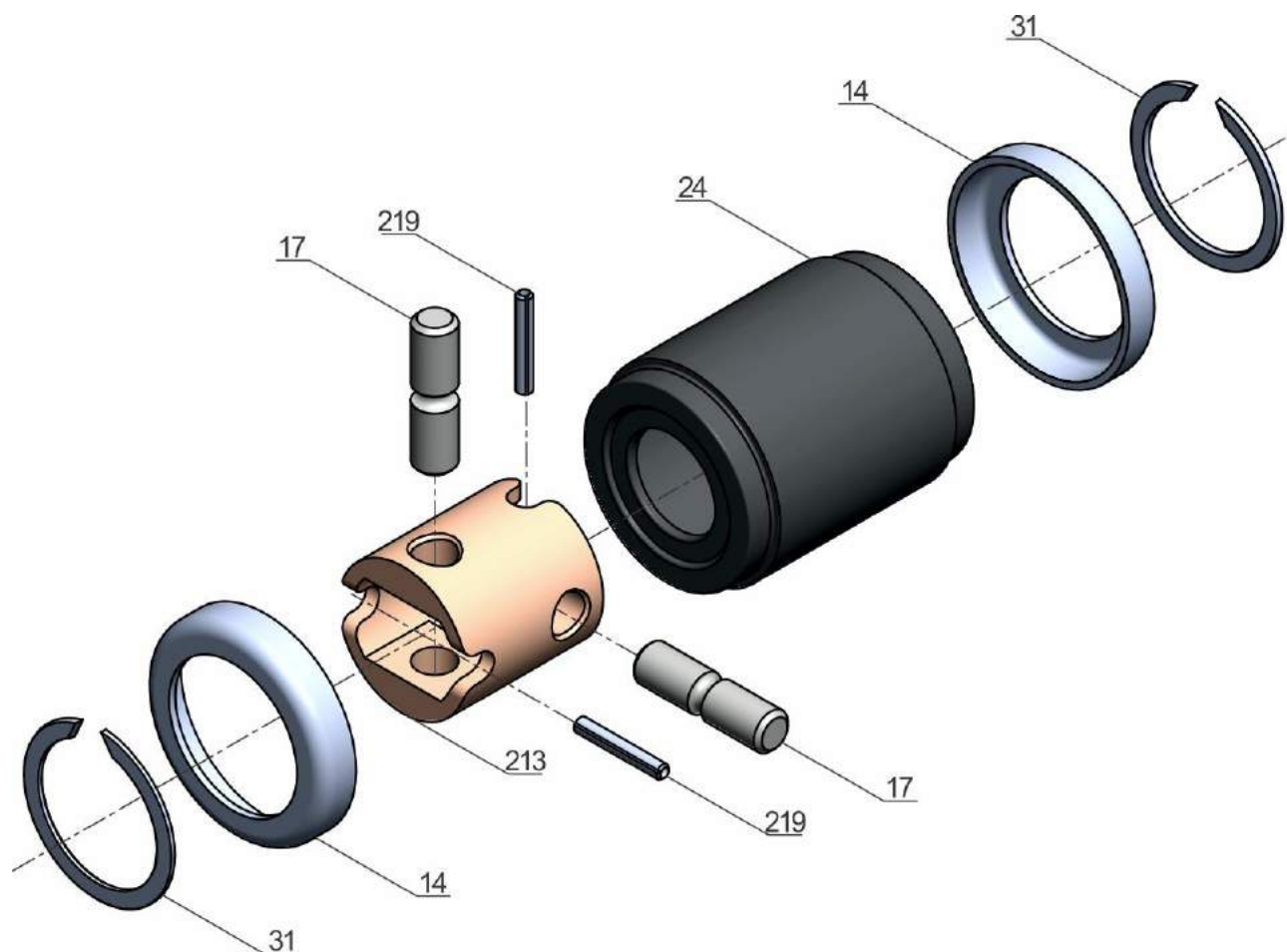


ESPINA ELÁSTICA

CARDAN A1



CARDAN A3



REFERENCIA	PIEZA	CANTIDAD	CODIGO
14	BUJE PROTECCIÓN	2	1160
17	PERNO CARDAN	2	2035
24	MANGUITO CARDAN	1	2057
31	ANILLO SEEGER	2	1285
213	BLOQUE CARDAN	1	2064
219	ESPINA ELÁSTICA	2	Ø5x24
MEDIDA EXTERNA	mm.	Ø80.8x113	---
PESO APROXIMADO	Kg.	2.3	---
CANTIDAD DE GRASA	ml.	52	---

CARDAN A3



CONJUNTO CARDAN

CARDAN A3



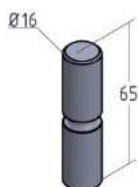
BUJE PROTECCIÓN

CARDAN A3/C



PERNO CARDAN

CARDAN A3/C



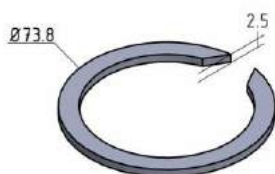
MANGUITO CARDAN

CARDAN A3



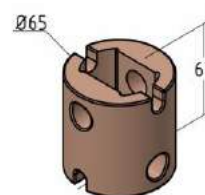
ANILLO SEEGER

CARDAN A3/C



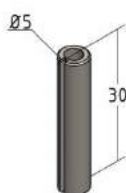
BLOQUE CARDAN

CARDAN A3

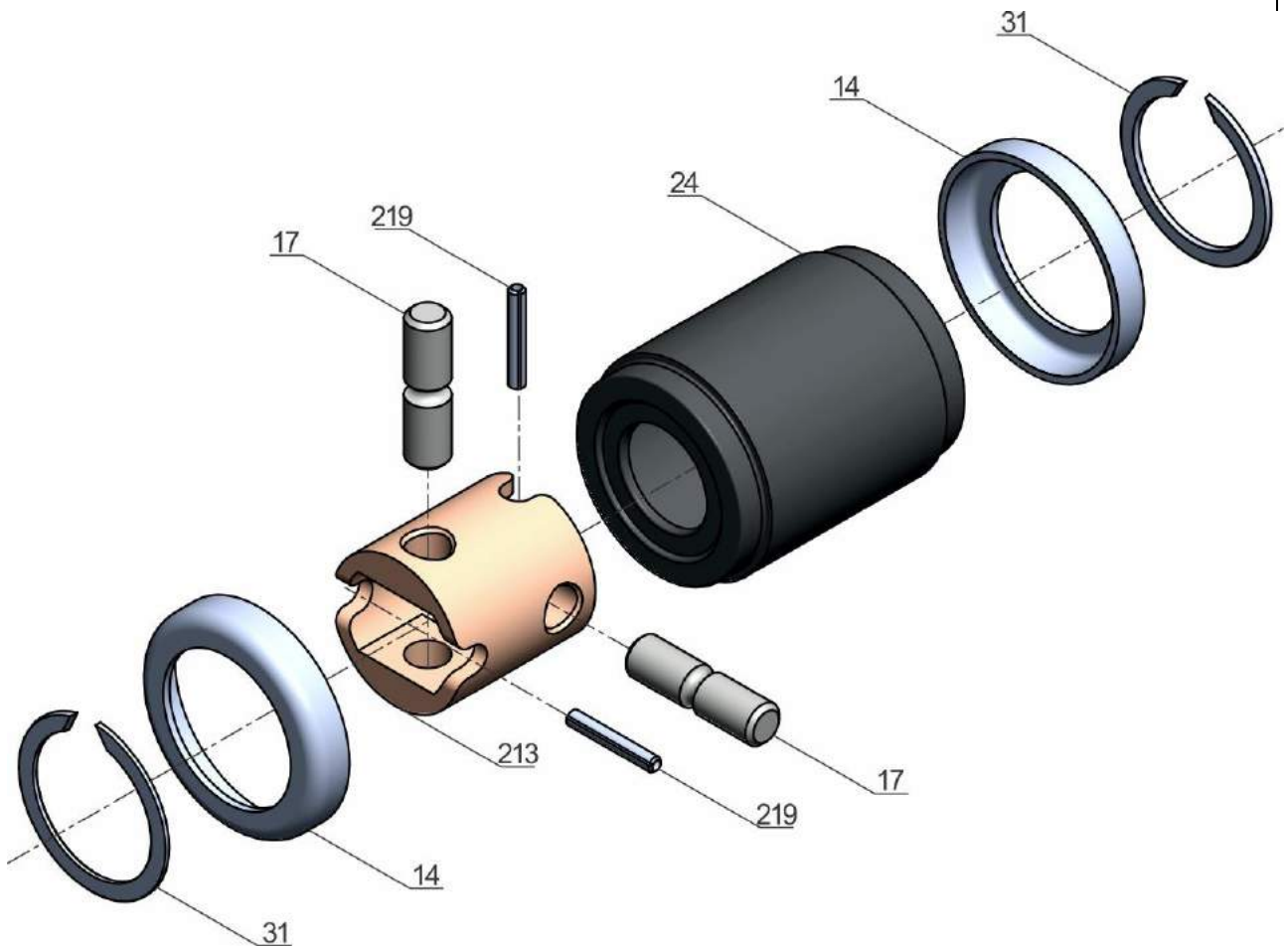


ESPINA ELÁSTICA

CARDAN A3/C



CARDAN A4



REFERENCIA	PIEZA	CANTIDAD	CODIGO
14	BUJE PROTECCIÓN	2	1161
17	PERNO CARDAN	2	2036
24	MANGUITO CARDAN	1	2058
31	ANILLO SEEGER	2	1286
213	BLOQUE CARDAN	1	2065
219	ESPINA ELÁSTICA	2	Ø5x40
MEDIDA EXTERNA	mm.	Ø98x130	---
PESO APROXIMADO	Kg.	3.2	---
CANTIDAD DE GRASA	ml.	90	---

CARDAN A4



CONJUNTO CARDAN

CARDAN A4



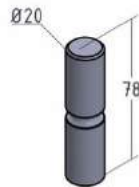
BUJE PROTECCIÓN

CARDAN A4/D



PERNO CARDAN

CARDAN A4/D



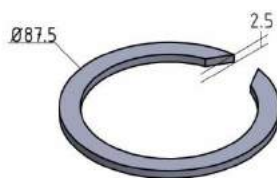
MANGUITO CARDAN

CARDAN A4



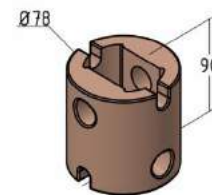
ANILLO SEEGER

CARDAN A4/D



BLOQUE CARDAN

CARDAN A4

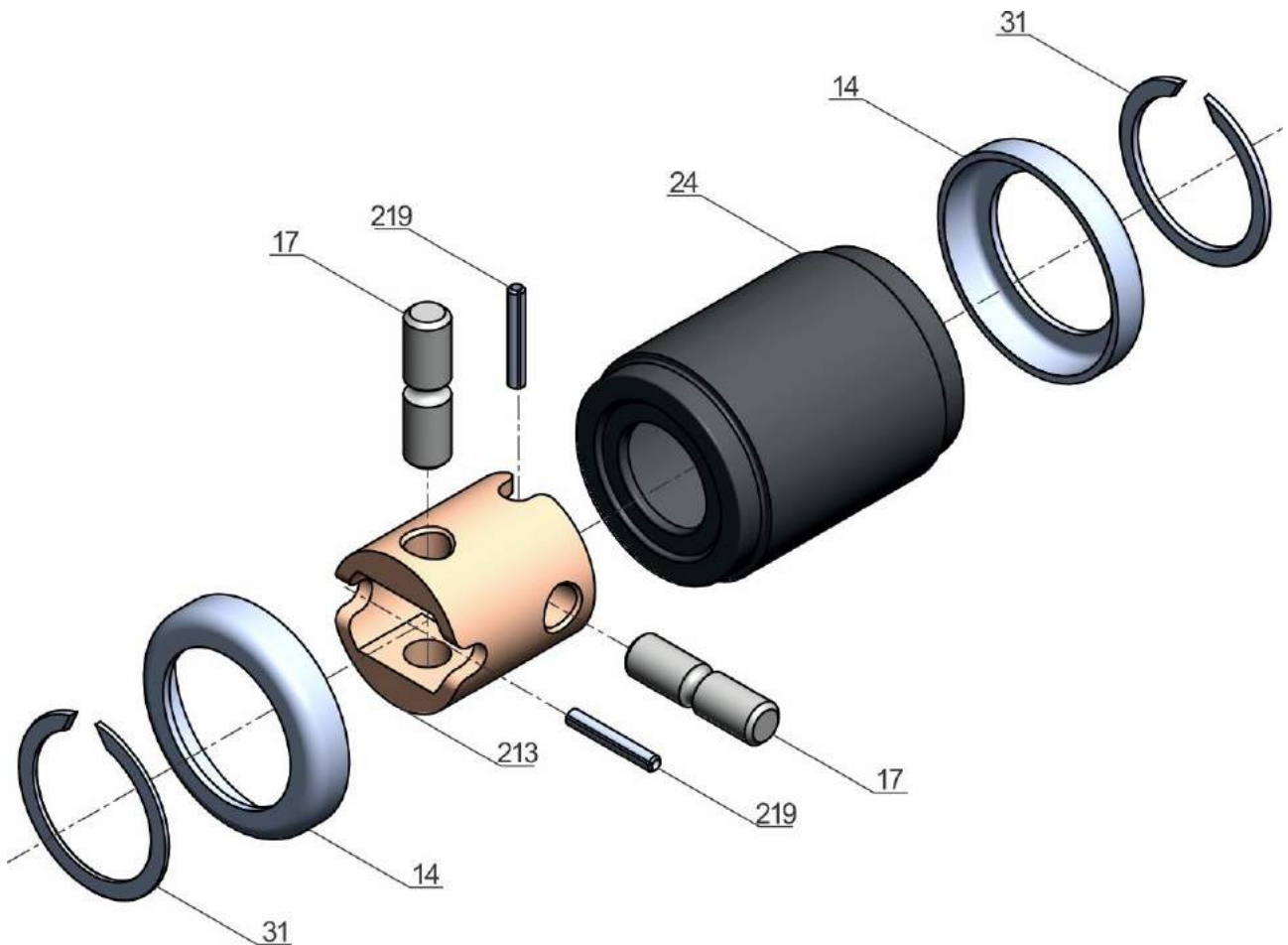


ESPIÑA ELÁSTICA

CARDAN A4



CARDAN A5



REFERENCIA	PIEZA	CANTIDAD	CODIGO
14	BUJE PROTECCIÓN	2	2033
17	PERNO CARDAN	2	2037
24	MANGUITO CARDAN	1	2059
31	ANILLO SEEGER	2	1288
213	BLOQUE CARDAN	1	2066
219	ESPINAS ELÁSTICAS	2	Ø5x40
MEDIDA EXTERNA	mm.	Ø120x178	---
PESO APROXIMADO	Kg.	4.5	---
CANTIDAD DE GRASA	ml.	250	---

CARDAN A5



CONJUNTO CARDAN

CARDAN A5



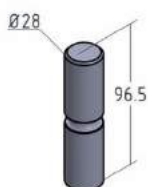
BUJE PROTECCIÓN

CARDAN A5/E



PERNO CARDAN

CARDAN A5/E



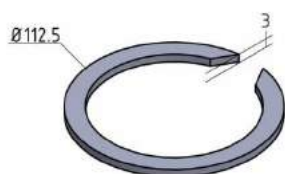
MANGUITO CARDAN

CARDAN A5



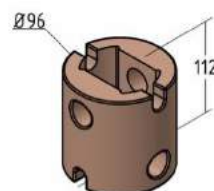
ANILLO SEEGER

CARDAN A5/E



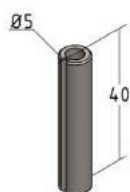
BLOQUE CARDAN

CARDAN A5

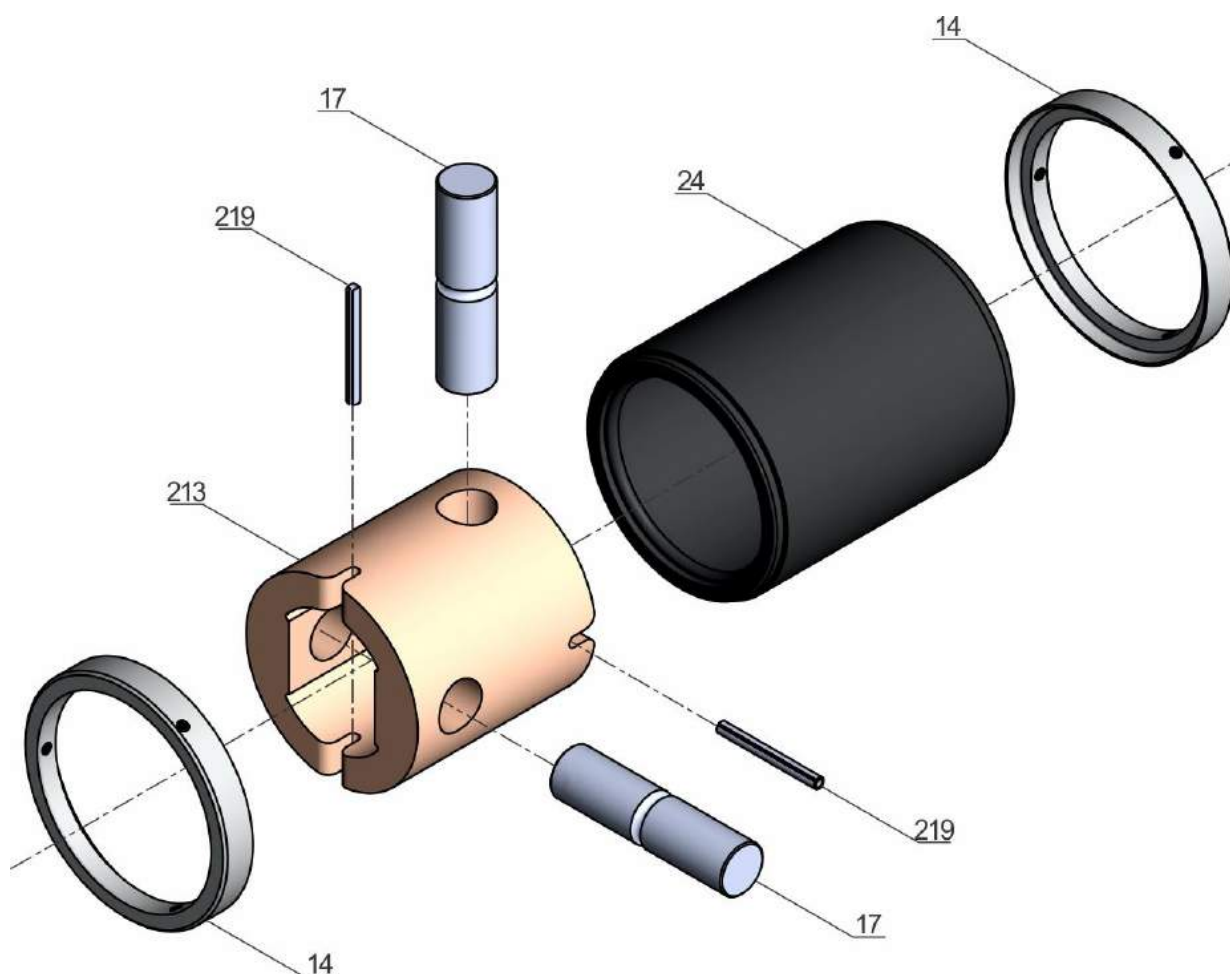


ESPINA ELÁSTICA

CARDAN A5/E



CARDAN G1



REFERENCIA	PIEZA	CANTIDAD	CODIGO
14	BUJE PROTECCIÓN	2	2050
17	PERNO CARDAN	2	2053
24	MANGUITO CARDAN	1	2060
213	BLOQUE CARDAN	1	2067
219	ESPINA ELÁSTICA	2	Ø6x50
MEDIDA EXTERNA	mm.	Ø145x240	---
PESO APROXIMADO	Kg.	10.2	---
CANTIDAD DE GRASA	ml.	400	---

CARDAN G1



CONJUNTO CARDAN

CARDAN G1



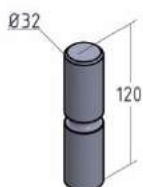
BUJE PROTECCIÓN

CARDAN G1



PERNO CARDAN

CARDAN G1



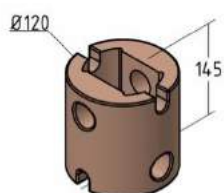
MANGUITO CARDAN

CARDAN G1



BLOQUE CARDAN

CARDAN G1

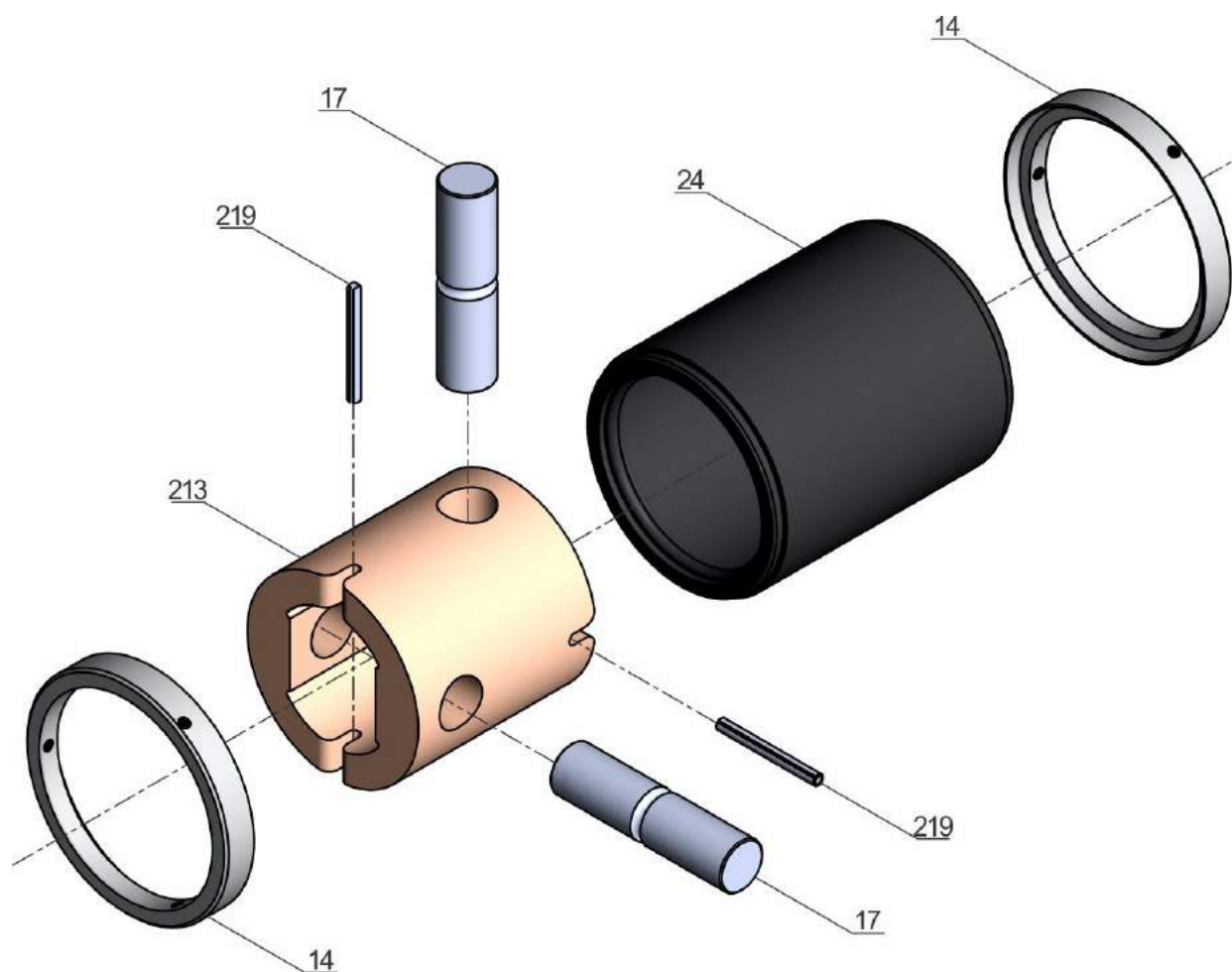


ESPINA ELÁSTICA

CARDAN G1



CARDAN F1



REFERENCIA	PIEZA	CANTIDAD	CODIGO
14	BUJE PROTECCIÓN	2	3099
17	PERNO CARDAN	2	3100
24	MANGUITO CARDAN	1	3101
213	BLOQUE CARDAN	1	3102
219	ESPINA ELÁSTICA	2	Ø8X80
MEDIDA EXTERNA	mm.	Ø165x	---
PESO APROXIMADO	Kg.	---	---
CANTIDAD DE GRASA	ml.	---	---

CARDAN F1



CONJUNTO CARDAN

CARDAN F1



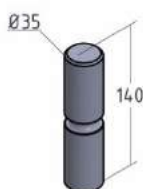
BUJE PROTECCIÓN

CARDAN F1



PERNO CARDAN

CARDAN F1



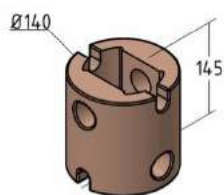
MANGUITO CARDAN

CARDAN F1



BLOQUE CARDAN

CARDAN F1

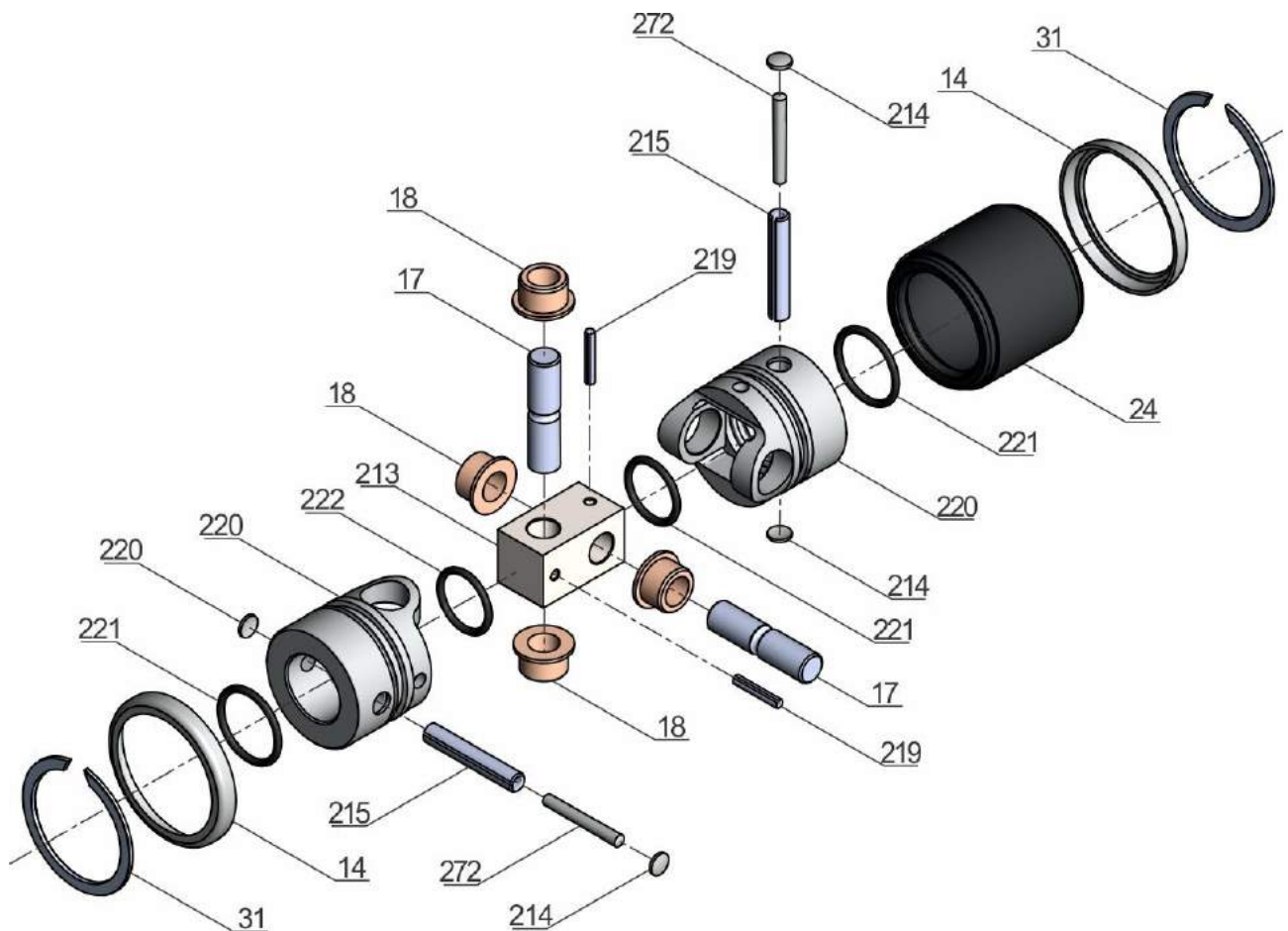


ESPINA ELÁSTICA

CARDAN F1



CARDAN B



REFERENCIA	PIEZA	CANTIDAD	CODIGO
14	BUJE PROTECCIÓN	2	1159
17	PERNO CARDAN	2	2034
18	BUJE CARDAN	4	2038
24	MANGUITO CARDAN	1	2042
31	ANILLO SEEGER	2	1284
213	BLOQUE CARDAN	1	1259
214	TAPA DE CIERRE	4	1142
215	BUJE ZYKO	2	2046
219	ESPINA ELÁSTICA	2	Ø5x24
220	CABEZA CARDAN	2	1263
221	O´RING	2	nº2-214
222	O´RING	2	nº2-218
272	ESPINA ZYKO	2	1289
MEDIDA EXTERNA	mm.	Ø65x105	---
PESO APROXIMADO	Kg.	1.2	---
CANTIDAD DE GRASA	ml.	26	---

CARDAN B



CONJUNTO CARDAN

CARDAN B



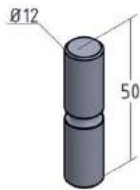
BUJE PROTECCIÓN

CARDAN A2/B



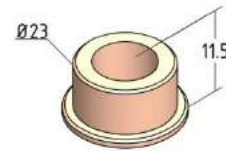
PERNO CARDAN

CARDAN A2/B



BUJE CARDAN

CARDAN B



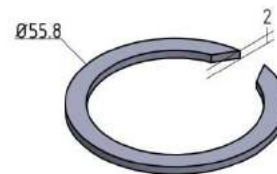
MANGUITO CARDAN

CARDAN B



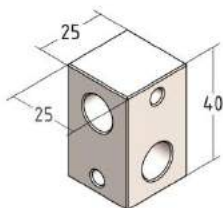
ANILLO SEEGER

CARDAN A2/B



BLOQUE CARDAN

CARDAN B



TAPA DE CIERRE

CARDAN B/C



CARDAN B



BUJE ZYKO

CARDAN B



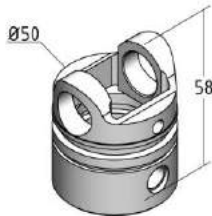
ESPINA ELÁSTICA

CARDAN A2/B



CABEZA CARDAN

CARDAN B



O´RING 2-214

CARDAN B



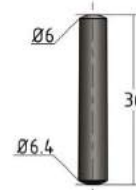
O´RING 2-218

CARDAN B

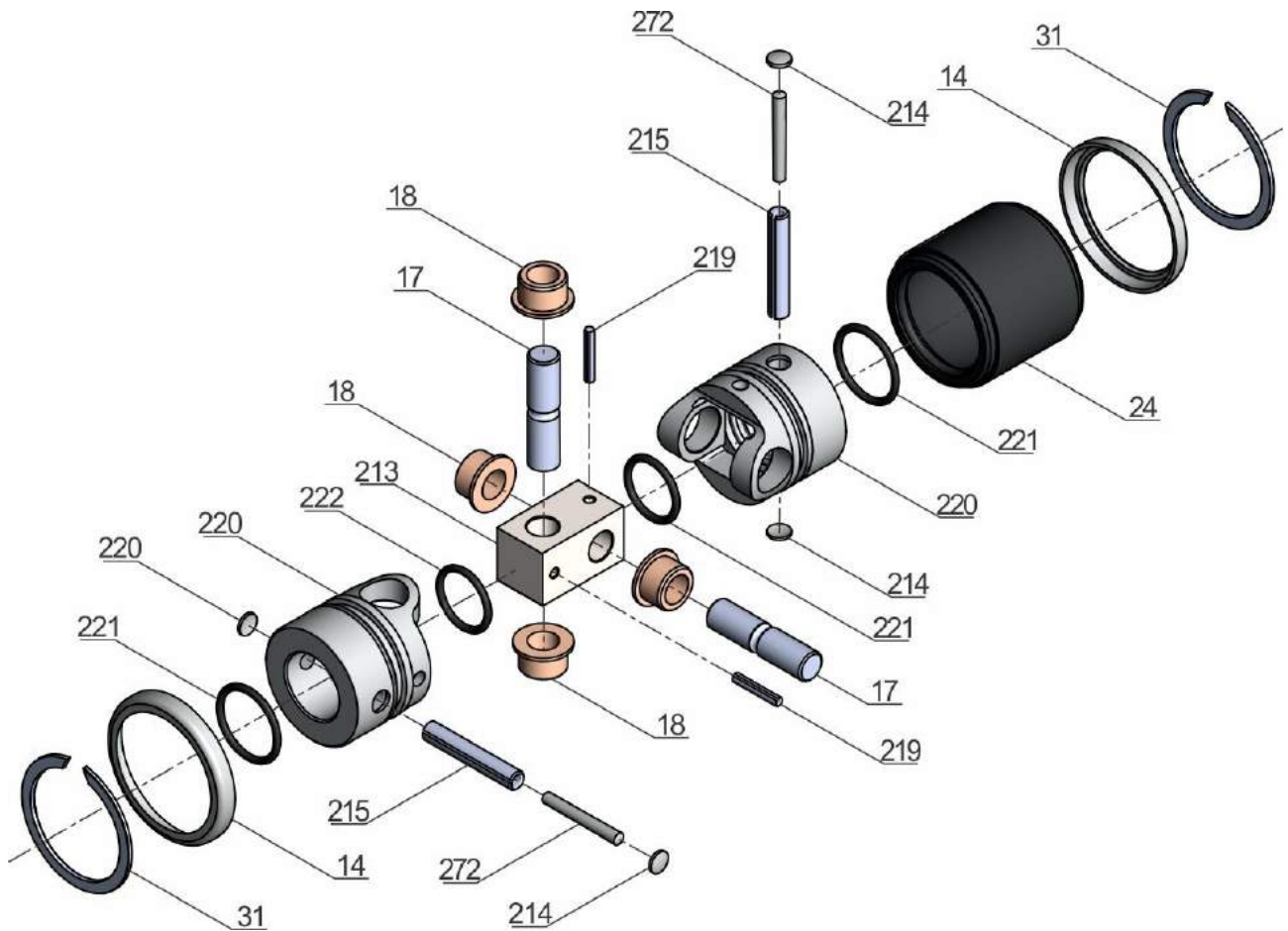


ESPINA ZYKO

CARDAN B



CARDAN C



REFERENCIA	PIEZA	CANTIDAD	CODIGO
14	BUJE PROTECCIÓN	2	1160
17	PERNO CARDAN	2	2035
18	BUJE CARDAN	4	2039
24	MANGUITO CARDAN	1	2043
31	ANILLO SEEGER	2	1285
213	BLOQUE CARDAN	1	1260
214	TAPA DE CIERRE	4	1142
215	BUJE ZYKO	2	2047
219	ESPINA ELÁSTICA	2	Ø5x30
220	CABEZA CARDAN	2	1264
221	O´RING	2	n°2-217
222	O´RING	2	n°2-221
272	ESPINA ZYKO	2	1290
MEDIDA EXTERNA	mm.	Ø80.8x123	---
PESO APROXIMADO	Kg.	2.5	---
CANTIDAD DE GRASA	ml.	47	---

CARDAN C



CONJUNTO CARDAN

CARDAN C



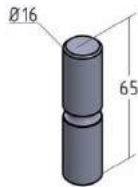
BUJE PROTECCIÓN

CARDAN A3/C



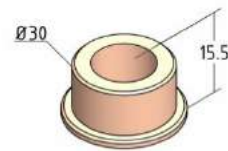
PERNO CARDAN

CARDAN A3/C



BUJE CARDAN

CARDAN C



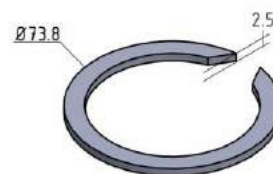
MANGUITO CARDAN

CARDAN C



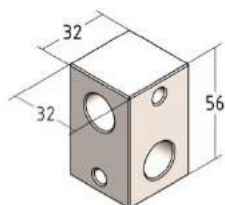
ANILLO SEEGER

CARDAN A3/C



BLOQUE CARDAN

CARDAN C



TAPA DE CIERRE

CARDAN B/C



CARDAN C



BUJE ZYKO

CARDAN C



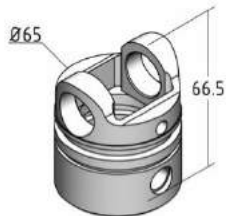
ESPINA ELÁSTICA

CARDAN A3/C



CABEZA CARDAN

CARDAN C



Ó RING 2-217

CARDAN C



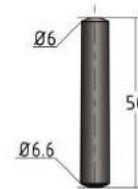
Ó RING 2-221

CARDAN C

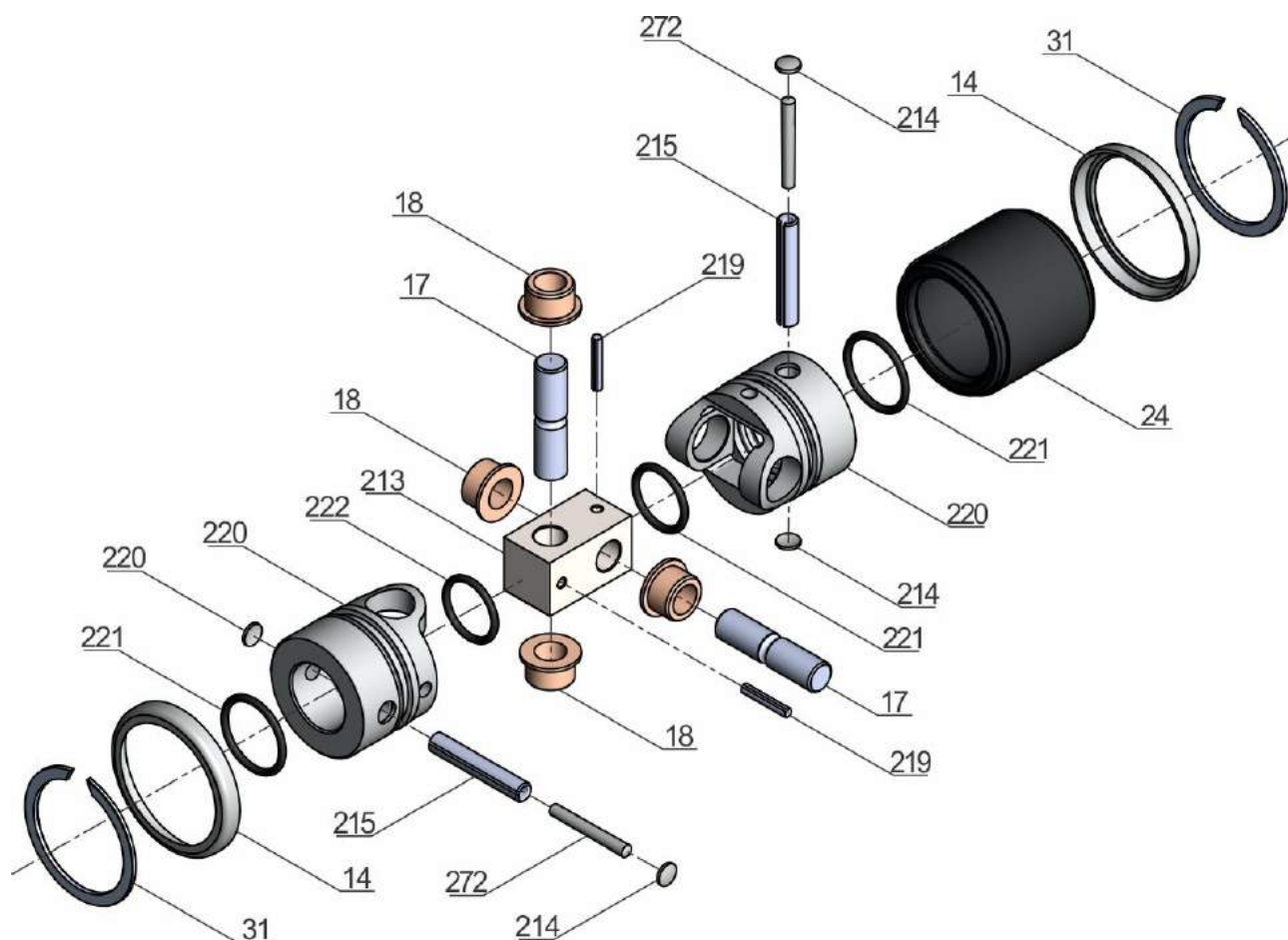


ESPINA ZYKO

CARDAN C



CARDAN D



REFERENCIA	PIEZA	CANTIDAD	CODIGO
14	BUJE PROTECCIÓN	2	1161
17	PERNO CARDAN	2	2036
18	BUJE CARDAN	4	2040
24	MANGUITO CARDAN	1	2044
31	ANILLO SEEGER	2	1286
213	BLOQUE CARDAN	1	1050
214	TAPA DE CIERRE	4	1143
215	BUJE ZYKO	2	2048
219	ESPINA ELÁSTICA	2	Ø5x40
220	CABEZA CARDAN	2	1061
221	O´RING	2	n°2-222
222	O´RING	2	n°2-224
272	ESPINA ZYKO	2	1291
MEDIDA EXTERNA	mm.	Ø98x160	---
PESO APROXIMADO	Kg.	4.8	---
CANTIDAD DE GRASA	ml.	104	---

CARDAN D



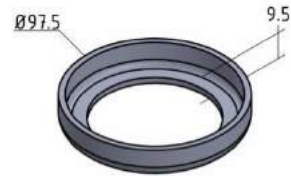
CONJUNTO CARDAN

CARDAN D



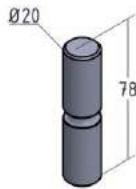
BUJE PROTECCIÓN

CARDAN A4/D



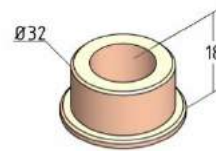
PERNO CARDAN

CARDAN A4/D



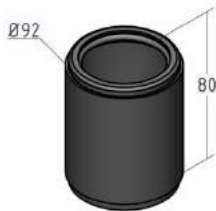
BUJE CARDAN

CARDAN D



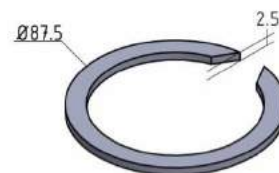
MANGUITO CARDAN

CARDAN D



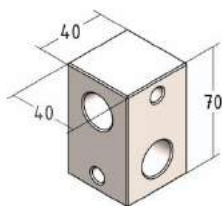
ANILLO SEGER

CARDAN A4/D



BLOQUE CARDAN

CARDAN D



TAPA DE CIERRE

CARDAN D

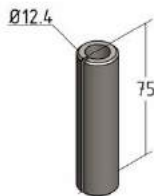


CARDAN D



BUJE ZYKO

CARDAN D



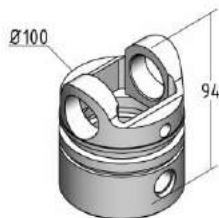
ESPINA ELÁSTICA

CARDAN D



CABEZA CARDAN

CARDAN E



O´RING 2-222

CARDAN D



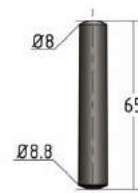
O´RING 2-224

CARDAN D

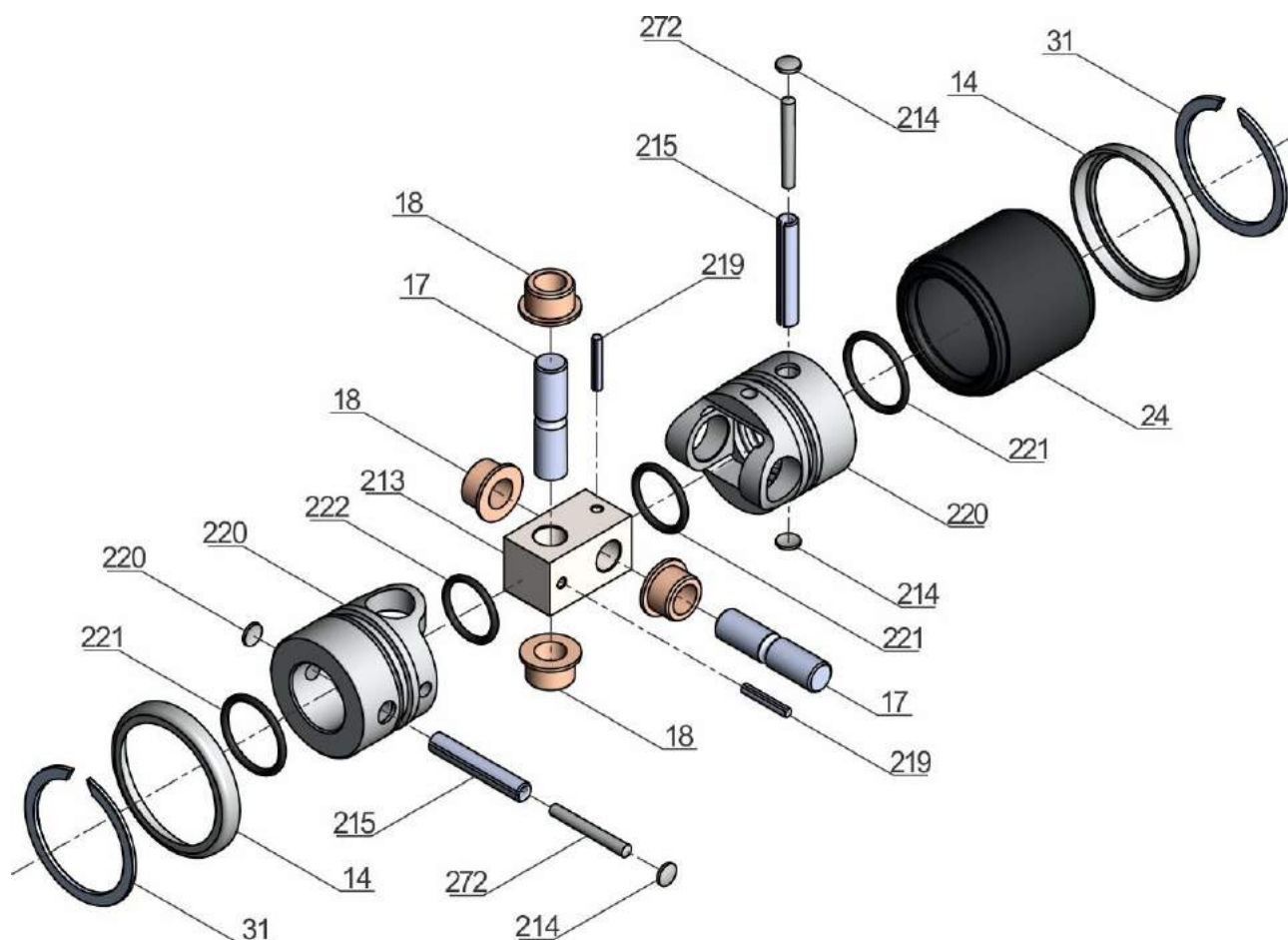


ESPINA ZYKO

CARDAN D



CARDAN E



REFERENCIA	PIEZA	CANTIDAD	CODIGO
14	BUJE PROTECCIÓN	2	2033
17	PERNO CARDAN	2	2037
18	BUJE CARDAN	4	2041
24	MANGUITO CARDAN	1	2045
31	ANILLO SEEGER	2	1288
213	BLOQUE CARDAN	1	1026
214	TAPA DE CIERRE	4	1144
215	BUJE ZYKO	2	2049
219	ESPINA ELÁSTICA	2	Ø5x40
220	CABEZA CARDAN	2	1527
221	O´RING	2	n°2-225
222	O´RING	2	n°2-227
272	ESPINA ZYKO	2	1394
MEDIDA EXTERNA	mm.	Ø120x178	---
PESO APROXIMADO	Kg.	8.5	---
CANTIDAD DE GRASA	ml.	173	---

CARDAN E



CONJUNTO CARDAN

CARDAN E



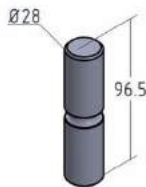
BUJE PROTECCIÓN

CARDAN A5/E



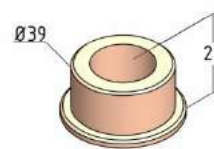
PERNO CARDAN

CARDAN A5/E



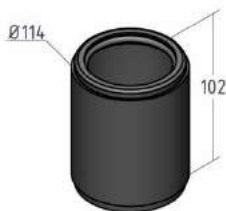
BUJE CARDAN

CARDAN E



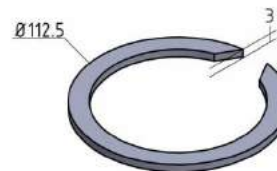
MANGUITO CARDAN

CARDAN E



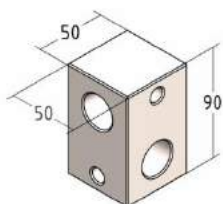
ANILLO SEGER

CARDAN A5/E



BLOQUE CARDAN

CARDAN E



TAPA DE CIERRE

CARDAN E



CARDAN E



BUJE ZYKO

CARDAN E



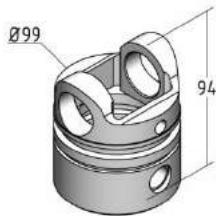
ESPINA ELÁSTICA

CARDAN A5/E



CABEZA CARDAN

CARDAN E



O´RING 2-225

CARDAN E



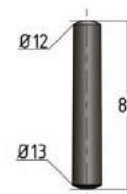
O´RING 2-227

CARDAN E



ESPINA ZYKO

CARDAN E



ESTATOR 236



ESTATOR 375



ESTATOR 600



ESTATOR 1024



ESTATOR 1500



ESTATOR 1900



ESTATOR 2650



ESTATOR 4500

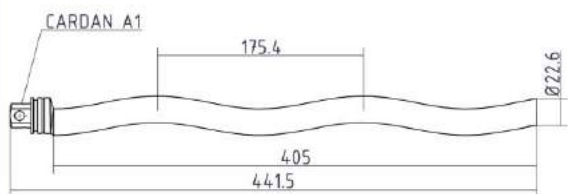


TORNILLO EXCÉNTRICO 236



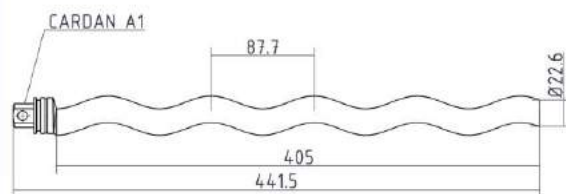
TORNILLO EXCÉNTRICO

E 236 A1



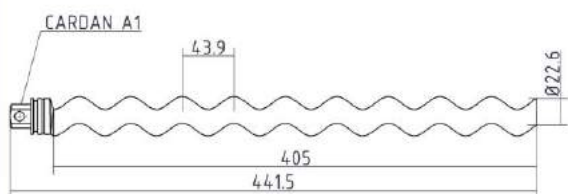
TORNILLO EXCÉNTRICO

E 2.236 A1



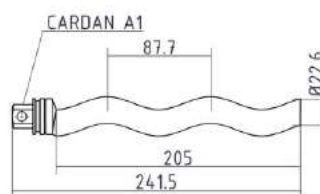
TORNILLO EXCÉNTRICO

E 4.236 A1



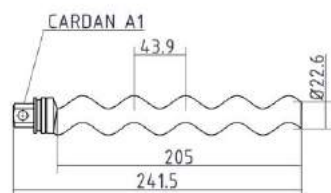
TORNILLO EXCÉNTRICO

E 236.2 A1



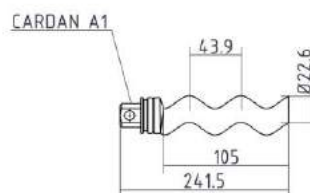
TORNILLO EXCÉNTRICO

E 2.236.4 A1



TORNILLO EXCÉNTRICO

E 236.4 A1

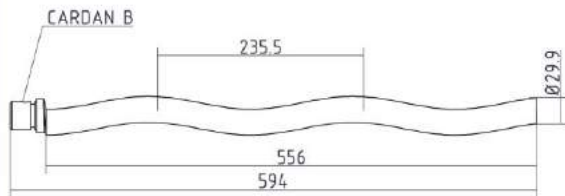


TORNILLO EXCÉNTRICO 375



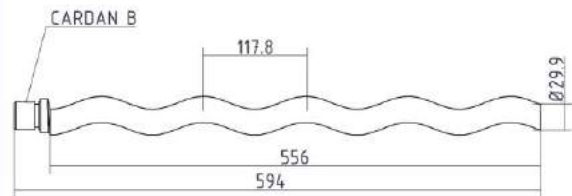
TORNILLO EXCÉNTRICO

E 375 B



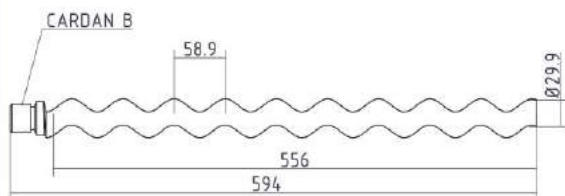
TORNILLO EXCÉNTRICO

E 2.375 B



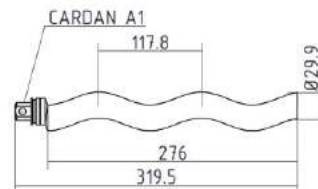
TORNILLO EXCÉNTRICO

E 4.375 B



TORNILLO EXCÉNTRICO

E 375.2 A1



TORNILLO EXCÉNTRICO 600

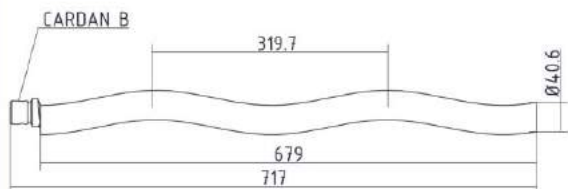


TORNILLO EXCÉNTRICO 1024



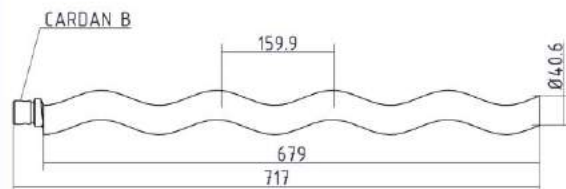
TORNILLO EXCÉNTRICO

E 1024 B



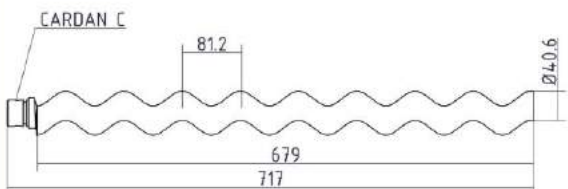
TORNILLO EXCÉNTRICO

E 2.1024 B



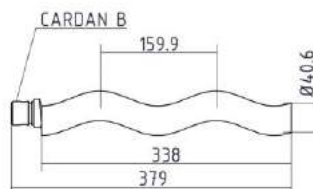
TORNILLO EXCÉNTRICO

E 4.1024 C



TORNILLO EXCÉNTRICO

E 1024.2 B



TORNILLO EXCÉNTRICO 1500



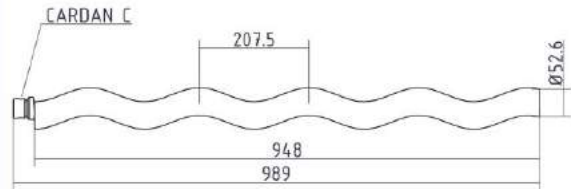
TORNILLO EXCÉNTRICO

E 1500 C



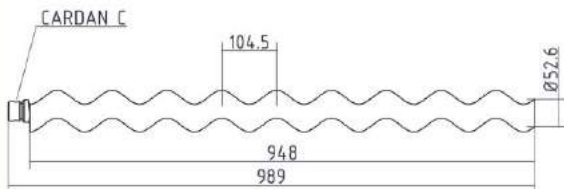
TORNILLO EXCÉNTRICO

E 2.1500 C



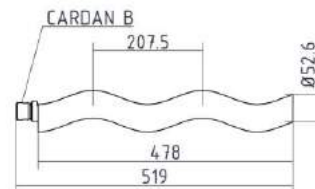
TORNILLO EXCÉNTRICO

E 4.1500 C



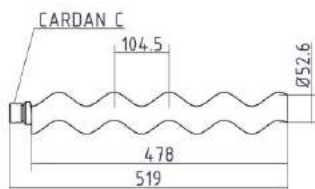
TORNILLO EXCÉNTRICO

E 1500.2 B



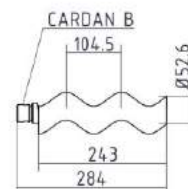
TORNILLO EXCÉNTRICO

E 2.1500.4 C



TORNILLO EXCÉNTRICO

E 1500.4 B

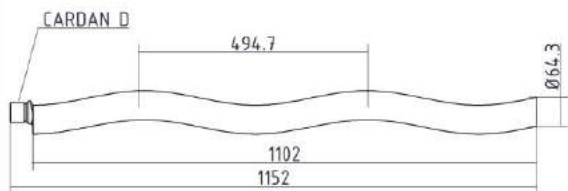


TORNILLO EXCÉNTRICO 1900



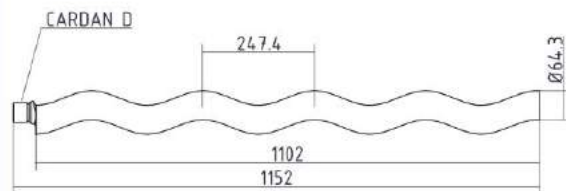
TORNILLO EXCÉNTRICO

E 1900 D



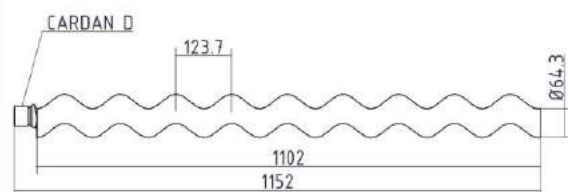
TORNILLO EXCÉNTRICO

E 2.1900 D



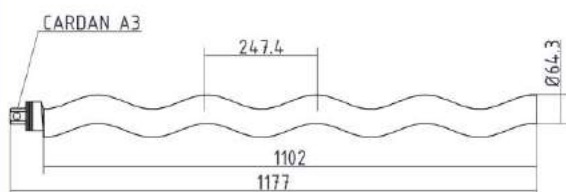
TORNILLO EXCÉNTRICO

E 4.1900 D



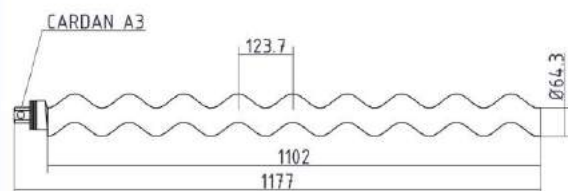
TORNILLO EXCÉNTRICO

E 2.1900 A3



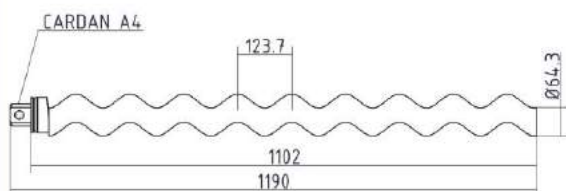
TORNILLO EXCÉNTRICO

E 4.1900 A3



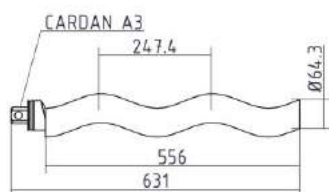
TORNILLO EXCÉNTRICO

E 4.1900 A4



TORNILLO EXCÉNTRICO

E 1900.2 A3



TORNILLO EXCÉNTRICO

E 1900.2 C

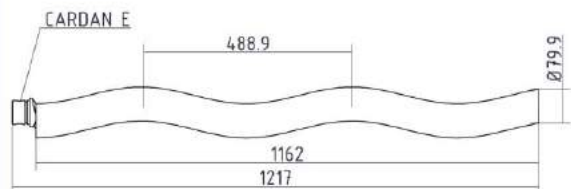


TORNILLO EXCÉNTRICO 2650



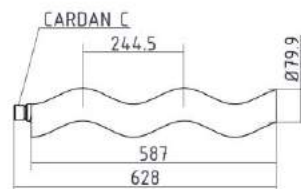
TORNILLO EXCÉNTRICO

E 2650 E



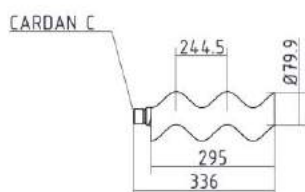
TORNILLO EXCÉNTRICO

E 2650.2 C



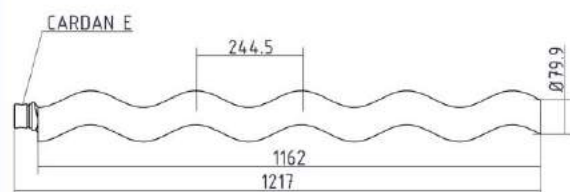
TORNILLO EXCÉNTRICO

E 2650.4 C



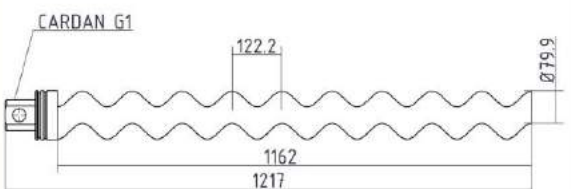
TORNILLO EXCÉNTRICO

E 2.2650 E



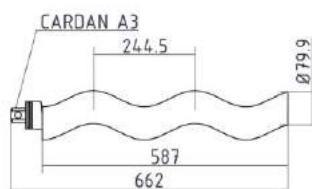
TORNILLO EXCÉNTRICO

E 4.2650 G1



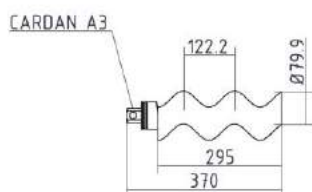
TORNILLO EXCÉNTRICO

E 2650.2 A3



TORNILLO EXCÉNTRICO

E 2650.4 A3

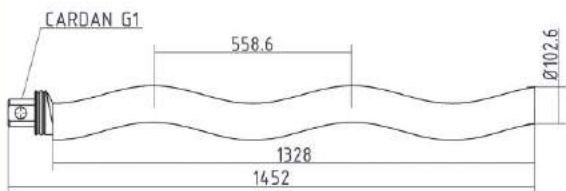


TORNILLO EXCÉNTRICO 4500



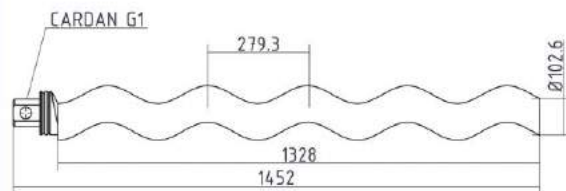
TORNILLO EXCÉNTRICO

E 4500 G1



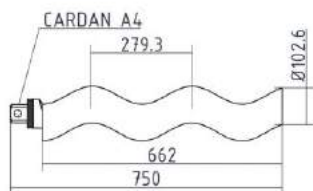
TORNILLO EXCÉNTRICO

E 2.4500 G1



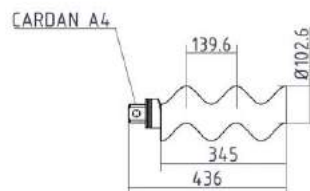
TORNILLO EXCÉNTRICO

E 4500.2 A4



TORNILLO EXCÉNTRICO

E 4500.4 A4



TORNILLO EXCÉNTRICO 6300



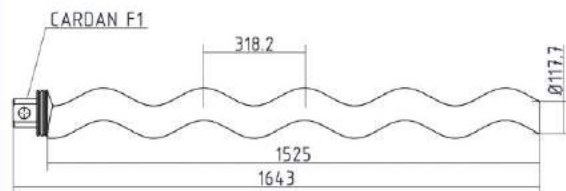
TORNILLO EXCÉNTRICO

E 6300 F1



TORNILLO EXCÉNTRICO

E 2.6300 F1



SELLOS MECÁNICOS

